



# **HEAVY GOODS VEHICLES**

## **Schedule of complementary traffic bans**

**2023**



# Schedule 2023

## ADDITIONAL TRAFFIC RESTRICTIONS ACCORDING TO NETWORKS

Days and timings	Throughout France	Île-de-France region		Rhône-Alpes region
		Paris > Province	Province > Paris	
Sunday 1 <sup>st</sup> January	00-22	00-24	00-24	00-22
Monday 2 January	-	-	06-10	-
Saturday 4 February	22-24	10-18 and 22-24	22-24	07-18 and 22-24
Saturday 11 February	22-24	10-18 and 22-24	22-24	07-18 and 22-24
Saturday 18 February	22-24	10-18 and 22-24	22-24	07-18 and 22-24
Saturday 25 February	22-24	10-18 and 22-24	22-24	07-18 and 22-24
Saturday 4 March	22-24	10-18 and 22-24	22-24	07-18 and 22-24
Saturday 8 April	22-24	10-24	22-24	22-24
Sunday 9 April – Easter	00-24	00-24	00-24	00-22
Monday 10 April - Easter Monday	00-22	00-24	00-24	00-22
Tuesday 11 April	-	-	06-10	-
Sunday 30 April	00-24	00-24	00-24	00-24
Monday 1 <sup>st</sup> May - Labor Day	00-22	00-24	00-24	00-22
Tuesday 2 May	-	-	06-10	-
Sunday 7 May	00-24	00-24	00-24	00-24
Monday 8 May - Victory Day 1945	00-22	00-24	00-24	00-22
Tuesday 9 May	-	-	06-10	-
Wednesday 17 May	22-24	16-24	22-24	22-24
Thursday 18 May – Ascension Day	00-22	00-24	00-24	00-22
Friday 19 May	-	16-21	06-10	-
Saturday 27 May	22-24	10-24	22-24	22-24
Sunday 28 May – Whit Sunday	00-24	00-24	00-24	00-24
Monday 29 May – Whit Monday	00-22	00-24	00-24	00-22
Tuesday 30 May	-	-	06-10	-
Thursday 13 July	22-24	16-24	22-24	22-24
Friday 14 July - Bastille Day	00-22	00-24	00-24	00-22
Saturday 15 July	07-19	07-19	07-19	07-19
Saturday 22 July	07-19	07-19	07-19	07-19
Saturday 29 July	07-19	07-19	07-19	07-19
Saturday 5 August	07-19	07-19	07-19	07-19
Saturday 12 August	07-19	07-19	07-19	07-19
Monday 14 August	22-24	16-24	06-10 and 22-24	22-24
Tuesday 15 August – Assumption Day	00-22	00-24	00-24	00-22
Wednesday 16 August	-	-	06-10	-
Saturday 19 August	07-19	07-19	07-19	07-19
Saturday 26 August	07-19	07-19	07-19	07-19
Tuesday 31 October	22-24	16-24	22-24	22-24
Wednesday 1 <sup>st</sup> November - All Saints' Day	00-22	00-24	00-24	00-22
Thursday 2 November	-	-	06-10	-
Friday 10 November	22-24	16-24	22-24	22-24
Saturday 11 November – Armistice Day	00-24	00-24	00-24	00-24
Sunday 12 November	00-22	00-24	00-24	00-22
Sunday 24 December	00-24	00-24	00-24	00-24
Monday 25 December - Christmas	00-22	00-24	00-24	00-22
Sunday 31 December	00-24	00-24	00-24	00-24

# Traffic restrictions

In France, general and complementary traffic bans relate to vehicles or combination vehicles with a gross vehicle weight exceeding 7.5 tons, assigned to the road transport of dangerous and non-dangerous goods, excluding specific vehicles and agricultural machinery and devices.

The general traffic ban applies all year long, to the whole national road network :

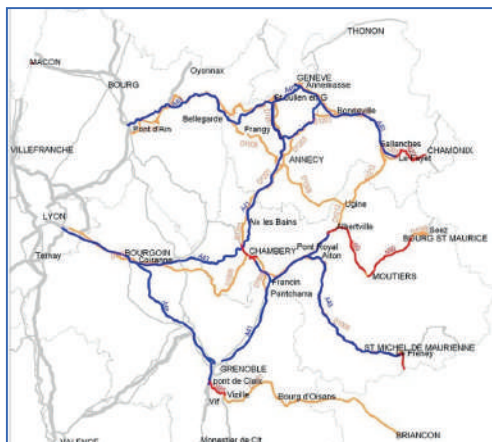
- ▶ Saturday 22:00 until Sunday 22:00 ;
- ▶ the eve of public holidays from 22:00 to 22:00 the day after.

The complementary traffic bans apply to part of the Rhône-Alpes network in winter and to the whole national road network in summer.

## Roads in the Rhône-Alpes network which are prohibited in winter

- ▶ Bourg-en-Bresse / Chamonix.
- ▶ Lyon / Chambéry / Tarentaise / Maurienne.
- ▶ Lyon / Grenoble / Briançon.
- ▶ Bellegarde et Saint-Julien-en-Genevois / Annecy / Albertville.
- ▶ Sallanches / Albertville.
- ▶ Chambéry / Annecy / Scientrier.
- ▶ Grenoble / Chambéry

(For more details about the Rhône-Alpes network, consult the site : [www.bison-fute.gov.fr](http://www.bison-fute.gov.fr))



## General traffic restrictions on the entire network (except the Île-de-France)

Days of traffic restrictions	Timings of traffic restrictions
<ul style="list-style-type: none"> <li>• Saturdays</li> <li>• Days before public holidays</li> </ul>	22:00 - 24:00
<ul style="list-style-type: none"> <li>• Sundays</li> <li>• Public holidays</li> </ul>	0:00 - 22:00
<ul style="list-style-type: none"> <li>• Saturdays that are also Public holidays</li> <li>• Sundays that are also days before Public holidays</li> </ul>	0:00 - 24:00

## Complementary traffic prohibitions

Days of traffic restrictions	Timings of traffic restrictions
Winter in Rhône-Alpes <ul style="list-style-type: none"> <li>• 4, 11, 18 and 25 February</li> <li>• 4 March</li> </ul>	7:00 - 18:00 and 22:00 - 24:00
Summer throughout the network <ul style="list-style-type: none"> <li>• 15, 22 and 29 July</li> <li>• 5, 12, 19 and 26 August</li> </ul>	7:00 - 19:00

## Specific timetables bans in Île-de-France

integrating general regulations and excluding seven summer Saturdays (at most)	Paris ↓ Province	Province ↓ Paris
Monday and Days after public holidays	-	6:00 - 10:00
Friday	16:00 - 21:00	-
Saturday	10:00 - 18:00 22:00 - 24:00	22:00 - 24:00
Sunday and public holidays	0:00 - 24:00	0:00 - 24:00
Days before public holidays	16:00 - 24:00	22:00 - 24:00

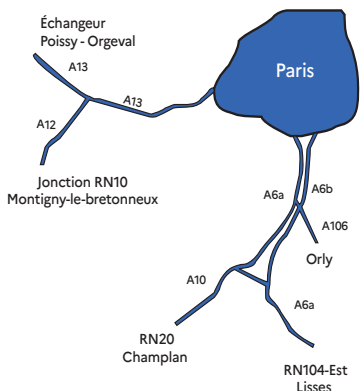


## Traffic bans in the Île-de-France

Specific bans apply in addition to the general and complementary bans in Île-de-France. No exemptions are accorded.

Prohibited motorway sections in Île-de-France (Greater Paris) (excluding specific vehicles and equipment and farming machinery).

- ▶ A6a and A6b motorways from the Paris ringroad to the connecting roads with the A6a and A6b motorways (Wissous municipality).
- ▶ The A106 motorway from its connection with the A6b to Orly airport.
- ▶ The A6 motorway from its connection with the A6a and the A6b to its connection with the RN104-east (Lisses municipality).
- ▶ The A10 motorway from its connection with the A6a and the A6b to the RN20 (Champlan municipality).
- ▶ The A13 motorway from the Paris ringroad to the Poissy/Orgeval interchange (Orgeval municipality).
- ▶ The A12 motorway from its connection with the A13 motorway (Rocquencourt triangle) to the RN10 (Montigny-le-Bretonneux municipality).



### info

#### Public holidays in France in 2023

- New Year's Day: Sunday 1st January
- Easter Monday: Monday 10 April
- Labour Day: Monday 1st May
- Victory Day 1945: Monday 8 May
- Ascension: Thursday 18 May
- Whit Monday: Monday 29 May
- Bastille Day: Friday 14 July
- Assumption: Tuesday 15 August
- All Saints' Day: Wednesday 1st November
- Armistice Day: Saturday 11 November
- Christmas: Monday 25 December

### info

#### Safety advices

For your safety and that of the other road users :

- respect in any event the safety distances and the speed limits ;
- follow the advice of caution spread on the road signs ;
- when driving, don't use television set, video games consoles and DVD players (decree of 30 July 2008) ;
- you do not use your mobile phone when you are driving, to hold both hands on the wheel and remain watchfu (decree of 24 June 2015).

### info

To find out the dates of public holidays in neighboring countries, see « TRANSPORTEURS » section : [www.bison-fute.gov.fr/restrictions-pays-limitrophes.html](http://www.bison-fute.gov.fr/restrictions-pays-limitrophes.html)



# Exemptions

## Permanent exemptions

Permanent exemptions, not requiring special authorisation, are granted under certain conditions, for the transportation of :

- livestock, perishable products or foodstuffs (see appendix I of the order of 11 July 2011, on [www.bison-fute.gouv.fr](http://www.bison-fute.gouv.fr) Transporters' info) ;
- beet pulps, during the beet campaign period ;
- agricultural produce, during the harvest period (products cultivated on farmland, including cereals and straw) ;
- press titles ;
- industrial gamma radiography equipment ;
- trucked air freight ;
- fireworks ;
- gaseous hydrocarbons in a liquefied mixture or petroleum products destined for the holding of properly authorised sports competitions ;
- medical gases, hospital waste, linen and goods necessary for the functioning of public or private healthcare establishments ;
- transportation linked to the assembly and dismantling of installations used for economic, sporting, cultural, educational or political events organised in accordance with the laws and regulations in force ;
- transportation linked to office or factory removals in urban areas ;
- transportation linked to itinerant trading, selling products at fairs or markets.

## Prefectoral exemptions

Exemptions may be issued by the prefects of *départements*.

### » Exceptional exemptions

Issued in the form of a temporary regulatory decision granting exemption, these do not require special individual decisions. They apply to essential and urgent transportation for the purposes of :

- dealing with the consequences, including economic consequences, of a crisis, such as a natural disaster, or exceptional natural or climate-related events or phenomena, such as drought, flooding, snowfalls;

## info

For obtaining details of conditions for exemptions, consult articles 5, 6 and 7 of the decree of April 16, 2021, relating to the ban on the movement of goods transport vehicles during certain periods :

**Consult the decree of April, 16, 2021**

## info

### Removal of bans

Prefects of *départements* may issue an exemption from a general prohibition on traffic and from additional restrictions in the absence of any harmonisation of traffic prohibitions with States with which France shares a border, in order to mitigate their effects.

They may issue an exemption from a general prohibition on traffic, from additional restrictions and from restrictions specific to the Ile-de-France, in the exceptional circumstances referred to opposite (section on «Exceptional exemptions») if the vehicles concerned have been immobilised for the 72 hours preceding the start of the prohibition.



- ☑ preventing a risk linked to a serious accident or disaster likely to pose a risk to life or to the integrity of persons, property or the environment.

### » Individual exemptions

These cannot last for a period longer than one year. They are granted for :

- ☑ transportation deemed essential and urgent, in response to an unforeseen event such as the breakdown of an electricity supply network, a hospital heating system or a fractured water pipe ;
- ☑ supplying a distribution centre threatened with shortages ;
- ☑ waste transport for the removal of waste from tips and slaughterhouses ;
- ☑ transport of dangerous goods intended for loading or from emergency unloading in maritime ports ;
- ☑ procurement of fuel to motorway service stations and of aircraft fuel to airports by tankers, harbours for fishing ships at regular passings ;
- ☑ vehicles transporting goods necessary for the continuous operation of certain services or production units. When they concern dangerous goods, those exemptions can only be granted after the opinion of the interdepartmental commission for dangerous goods transportation ;
- ☑ vehicles destined to help perform public services or emergency services in response to immediate collective needs ;
- ☑ vehicles supplying clean linen and evacuating dirty linen to/from hotel complexes with a cumulative capacity of 200 bedrooms and over ;
- ☑ vehicles used to deliver cattle breedings with feeding stuffs.

**Where the journey covers several departments, the exemption is granted after the prefects agreement departments departure and arrival.**



#### Validity of the exemption

The exemption must be carried aboard the vehicle and have been completed by its holder, indicating the movement date and the vehicle registration number.



#### Exceptional exemptions

are issued by the defence and security zone prefect in circumstances whose scope extends beyond the confines of the *département*.

**Individual exemptions** are issued by the prefect of the *département* in which the journey starts or the *département* of entry into France, in the case of transportation originating abroad.



# Local permanent traffic bans

For safety reasons, heavy goods vehicles are prohibited on some roads in the national road network.

The main prohibitions inherent to prefectural orders targeting vehicles exceeding 7.5 tons (or other tonnage specified in the text) and assigned to the transport of goods, are listed below. Prohibitions relating to public transport are also listed (non-exhaustive list).

## EAST AREA

### N59/N159/D1059 - Lunéville (54)/Sélestat (67)

between Lunéville and Sélestat in both directions, traffic ban for vehicles over 3,5 t of GVWR or GCWR in transit.

### N66/D1066 - Remiremont (88)/Cernay (68)

- ▶ between Remiremont and Cernay in both directions, traffic ban for vehicles over 3,5 t of GVWR or GCWR in transit ;
- ▶ between the Séchenat viaduct and the West round-about of Saint-Amarin, traffic ban for vehicles over 19 t of GVWR or GCWR from 22h to 6h with loading or unloading in Alsace or in Lorraine.

## NORTH AREA

### A1/N356/A22 - Faches-Thumesnil (59)/Aalbeke (BE)

in the south – north direction, between the interchange n° 20 Faches-Thumesnil (A1), and the Aalbeke interchange (Belgium), traffic ban for vehicles over 3,5 t in transit.

## SOUTH AREA

### A557 - viaduct of Arenc (13)

traffic ban for vehicles over 3,5 t or carrying hazardous materials in transit.

### A507 - L2 (13)

traffic ban for vehicles carrying hazardous materials using NGV as fuel.

info

Non-compliance with these prohibitions may lead the carrier to use an unsuitable road and imply mortal danger for both the carrier and other road users.

info

Comply with the indications given by the police and road signs in all events.



### **A55 - Cap Pinède/Vieux-Port interchange (13)**

between the interchange A7/A55 and Marseille Vieux-Port, traffic ban for vehicles over 3,5 t, and vehicles carrying hazardous materials in transit between Cap Pinède interchange and the Vieux-Port.

### **A50 - La Penne-sur-Huveaune/Marseille (13)**

in the direction of La Penne-sur-Huveaune/Marseille, traffic ban for vehicles carrying hazardous materials.

### **A7 - Septème-les-Vallons/Marseille (13)**

in the direction of Septème-les-Vallons/Marseille, traffic ban for vehicles carrying hazardous materials.

### **A50/A57 - tunnel of Toulon (83)**

traffic ban for vehicles over 19 t and vehicles for public transportation, in direction of Marseille.

### **A8 - Antibes tollgate (06)/Italie**

in both directions between Antibes tollgate and the Italian border, traffic ban for vehicles carrying hazardous materials such as ethylene oxide (ONU 263/1040).

### **N85 - Aspres-lès-Corps/Gap (05)**

in both directions, traffic ban for vehicles over 26 t of GVWR without decelerators between the boundary of Isère region and the entrance of Gap city.

### **N94 - Embrun/Montgenèvre pass (05)**

- ▶ between the Embrun southern roundabout and the Italian border, traffic ban for vehicles over 26 t of GVWR or GCWR without decelerators ;
- ▶ between La Vachette and Montgenèvre pass, traffic ban for vehicles over 26 t of GVWR or GCWR, unless local access and vehicles with EURO 0 standard.

### **N100/N580 - Avignon (84)**

the Avignon crossing by the Royaume bridge or the Daladier bridge is prohibited for vehicles over 3,5 t.

### **N7 - Orange (84)**

the Orange crossing is prohibited for vehicles over 3,5 t.

## **SOUTH-EAST AREA**

### **A7/A6 – Ternay/Limonest (69)**

- ▶ traffic ban for vehicles over 7,5 t in transit between the Ternay interchange (A47) and the Limonest interchange, unless the A7 section between the A450 interchange and the Boulevard Urbain Sud interchange ;
- ▶ in the Fourvière tunnel, traffic ban for vehicles over 4,30 m high, and vehicles carrying hazardous materials.

### **BPNL - Boulevard Périphérique Nord de Lyon (69)**

traffic ban for vehicles over 19 t or over 4,50 m high, as well as vehicles carrying hazardous materials in transit.

### **N7 - Vienne/Péage-de-Roussillon (38)**

- ▶ between Vienne and Le Péage-de-Roussillon in the north – south direction, traffic ban for vehicles over 3,5 t ;
- ▶ the Péage-de-Roussillon crossing is prohibited for vehicles carrying hazardous materials.

### **N85 - Laffrey downhill (38)**

in the downward track, traffic ban for vehicles over 7,5 t of GVWR and vehicles for public transportation.

### **N205 - Mont-Blanc tunnel (74)**

Mont-Blanc tunnel crossing is prohibited for vehicles over 3,5 t, or over 4,70 m high, and vehicles with EURO 0, 1, 2 standard as well as vehicles carrying hazardous materials.

### **N543 - Fréjus tunnel (73)**

Fréjus tunnel crossing is prohibited for vehicles over 3,5 t, and vehicles with EURO 0, 1, 2 standard ; vehicles carrying hazardous materials are authorised to travel in convoy.





# Traffic bans applied in bordering countries

Some bordering countries have different types of bans. These traffic bans restrict border crossings when combined with French ones.

## Spain

In the Basque Country, heavy goods vehicles exceeding 7.5 tons are authorised on Sundays and public holidays when travelling from France to Spain on the main roads, and on the A8 and N1 roads after the French-Spanish border crossing at Bariatou in particular.

In Catalonia, in the province of Girona, heavy goods vehicles with a MAW exceeding 7.5 tons are prohibited on the AP7/E15 motorway travelling from Spain to France (between Agullana and the Perthus pass) some public holidays in the schedule of traffic bans in France.

Precise information on traffic restrictions for exceptional transport and the transport of dangerous substances and punctual traffic restrictions for heavy goods vehicles exceeding 7.5 tons in Spain are accessible on the web site of the traffic division : [www-org.dgt.es/es/el-trafico/restricciones/](http://www-org.dgt.es/es/el-trafico/restricciones/)  
In the Basque Country : [www.trafikoa.euskadi.eus/lfr/web/trafikoa](http://www.trafikoa.euskadi.eus/lfr/web/trafikoa)  
In Catalonia : [www.gencat.cat/transit/mesures.htm](http://www.gencat.cat/transit/mesures.htm)

## Italy

The circulation of heavy goods vehicles exceeding 7.5 tons is prohibited on Sunday and the holidays :

- ▶ between 9:00 and 22:00 from October to May ;
- ▶ between 7:00 and 22:00 from June to September ;
- ▶ between 8:00 and 16:00 on Saturdays in summer, from July to the end of August.

Both French and Italian regulations prohibit traffic crossing the alps in summer from Saturday 7:00 to Sunday 24:00.

## Luxembourg

Heavy goods vehicles exceeding 7.5 tons, with or without a trailer, intended for the transport of goods from Belgium or Germany to France are prohibited on public roads in Luxembourg :

- ▶ from Saturday 21:30 to Sunday 21:45 ;
- ▶ the days before public holidays from 21:30 to the following day 21:45.

For more information, consult the web site [www.cita.lu](http://www.cita.lu)



■ Neighbouring countries with prohibitions

### Germany

Heavy goods vehicles exceeding 7.5 tons and semi-trailers are not authorised to travel between 00:00 and 24:00 on Sundays and public holidays. This provision applies to the entire German road network. This restriction does not apply to vehicles carrying perishable foods (including the corresponding empty legs).

In July and August, additional traffic restrictions apply on Saturdays from 7:00 to 20:00 on certain motorways, and, to a lesser extent, on sections of busy federal roads during the summer school holidays.

For more information, consult the web site

[www.europe-camions.com/news/interdiction-circuler/alle-magne-de](http://www.europe-camions.com/news/interdiction-circuler/alle-magne-de)

### Switzerland

Traffic is prohibited on Sundays, public holidays and at night. With the exception of vehicles assigned to the transport of passengers, the prohibition to travel on Sundays and general public holidays applies :

- ☑ to heavy automobile vehicles with a total authorised weight of more than 3.5 tons ;
- ☑ to articulated vehicles with a total combined authorised weight of more than 5 tons ;
- ☑ to vehicles pulling a trailer with a total authorised weight of more than 3.5 tons.

These vehicles are also subject to the permanent prohibition to travel at night between 22:00 and 5:00.

For more information, consult the web site [www.truckinfo.ch](http://www.truckinfo.ch)



### Special authorisations

In Switzerland, exemptions may only be accorded for emergency transport (which must absolutely be performed on a Sunday or by night). For more information, consult the automobile service [www.asa.ch](http://www.asa.ch)

Consult the traffic brigade for the cantons of Basel-town, Basel-Country and Grisons [www.police.ch](http://www.police.ch)



# Specific transports

## Public transport for children

**Children's public transport, using vehicles assigned to public transport duties (i.e. with more than nine seats, including the driver's seat), is defined as transportation organised primarily for persons aged under 18, regardless of the reason for their journey.**

The principle of prohibiting the movement of child transport on the most sensitive dates of the summer period, on the entire road network, is renewed in 2023:

**Saturdays August 5 and 12 are prohibited from midnight to midnight for all trips**, except those made within a department and between neighboring departments.

► **Mandatory list of passengers** (article 60 ter of the order of 2 July 1982 on public passenger transport).

As a safety measure, any coach assigned to public passenger transport must now have a list with the names of passengers on board. The list must be established and notified to the carrier by the party organising the service. This list must be presented to controllers upon request.

The document must comprise certain mandatory mentions, but may take any form. Mandatory mentions include: the full names of all of the passengers and, in the context of public transport for children, the telephone number of a person to be contacted for each child.

This document is not however required if the transport remains in the département of boarding and bordering départements.

For more informations on regulations about the public transport of children, consult the site [www.ecologie.gouv.fr/organisation-des-transports-routiers-nationaux-personnes](http://www.ecologie.gouv.fr/organisation-des-transports-routiers-nationaux-personnes)

## Exceptional transport

**The transport or carriage of goods, machinery or vehicles defined as exceptional due to their dimensions or weight, which do not comply with regulatory limits, require prior authorisation.**

Two types of authorisation exist: individual personal authorisation and local transport authorisation. Contact your préfecture or, for foreign countries, the préfecture of the département of arrival in France for information.

**Convoys with transport authorisation remain prohibited :**

- on the entire road and motorway network from Saturday or

## info

### Safety belt

Make sure children wear the safety belt if fitted in the vehicle. Since September 1, 2015, vehicles must be equipped with seat belts.

### Alcohol breath test

All new coaches operating from 2010 must be fitted with breath alcohol ignition interlock devices.

## info

### Reminder concerning speed limits

(Highway code : article R413-10)

As of July 1, 2018, the maximum authorized speed has been reduced from 90 to 80 km / on two-way single carriageway roads without a central separator. Outside built-up areas and with the exception of tracks on which vehicle speed is limited to 80 km / h in application of 3° of I of article R. 413-2, the speed of public transport vehicles is limited to 90 km/h. However, this maximum speed is raised to 100 km/h :

- on motorways, in the case of vehicles with a total weight exceeding 10 tonnes and having particular technical specifications defined by an order of the Minister of Transport ;
- on motorways and dual carriageways separated by a central reservation, in the case of vehicles weighing 10 tonnes or less.

In operation, these maximum speeds are reduced to 70 km/h for buses and coaches carrying standing passengers.



the day prior to a public holiday 12:00 to Monday or the day after the public holiday 6:00, unless a prefectural exemption is accorded in case of absolute necessity and according to local circumstances, with the opinion of the prefects of the départements crossed if applicable ;

- during periods and on itineraries on which vehicles carrying goods or dangerous substances are prohibited, defined each year in an Interministerial order ;
- during the application of thawing regulations, on the relevant itineraries ;
- during snow or black ice or if visibility is inadequate.

These provisions do not apply to convoys and military transport or to training vehicles and the vehicles of the traffic police, which are subject to specific rules.

### Transporting logs (roundwood)

**Roundwood refers to any part of a chopped tree trunk or branches.**

This traffic is authorised up to a maximum of 57 tons (6 axles) or 48 tons (5 axles) for vehicles with certification on the absence of a economically viable alternative to road transport, in the conditions and on the routes pre-defined in an order by the prefect of the *département*.

**This traffic remains however prohibited :**

- on the motorway, for combination vehicles which cannot maintain a steady speed of 50 km/h ;
- on the entire road and motorway network, from Saturday or the day prior to a public holiday 12:00 to Monday or the day following the public holiday 6:00 (excluding prefectural exemptions granted in cases of absolute necessity) ;
- during snow or black ice or if visibility is inadequate.



#### References :

- Highway code : articles R433-1 - R433-6 and R433-17 - R433-20
- Order of 4 May 2006 on the exceptional transport of goods, machinery or vehicles and combination vehicles with more than one trailer (amended by orders of 04/09/2007, 25/02/2011, 04/04/2011, 08/08/2011, 28/04/2012, 25/06/2013).

For more information on regulations on exceptional transport or on the means of obtaining authorisation, consult the site :

[www.securite-routiere.gouv.fr](http://www.securite-routiere.gouv.fr)



#### References :

Decree n° 2011-368 of 4 April 2011 on the transport of logs (roundwood) and completing article R 312-3 of the highway code.



# Bad weather plans

**Bad weather plans are prepared by road operation services in case of weather crisis situations caused by snow or black ice. These plans are also known as snow plans or snow and black ice plans.**

These plans mainly aim to ensure the **safety of road users and ensure smooth traffic flow**, preventing roads and motorways from becoming jammed. Special action is taken for this purpose: priority sanding or snow clearing for key itineraries; traffic control; creation of advisory diversions, possible closing of roads sections or motorways in case of traffic jams...

Some provisions relate more directly to heavy goods vehicles and prohibit access to snow-covered areas downstream via storage measures. These downstream measures will avoid a complete road jam, and will simplify the use of snow clearing machinery or, if necessary, the access of rescue services.

**Simplifying the work of winter machinery** compliance with certain instructions such as not overtaking snow ploughs, not changing lane or not overtaking on a road with snow or black ice is recommended.

## For driving on snow-covered roadway...

«If a road has three or more lanes assigned to one direction, drivers of vehicles with a gross vehicle weight rating exceeding 3.5 tons or combination vehicles with a length exceeding 7 metres are prohibited from using any lane other than the two lanes located nearest to the right edge of the road, unless it is necessary to use other lanes in view of preparing for a change of direction, in which case disturbance to general traffic flow must be limited as far as possible...» (art. R 412-25 and R 414-17 of the highway code).

## info

### Stopping distance

At 50 km/h, on a dry road, a heavy goods vehicle needs 44 m to stop, as compared with at least 100 m on a road covered with a thin layer of snow.

# Applicable regulations

- Order of May 18, 2009 amending the Order of July 2, 1982 relating to public passenger transport, which mainly establishes a new definition of the transport of children.
- Order of April 16, 2021 on the ban on the movement of goods transport vehicles during certain periods, which repeals the decree of March 2, 2015.
- Order of 20 December 2022 on complementary traffic prohibitions for 2023 for vehicles carrying goods.
- Order of 20 December 2022 on the days prohibited for 2023 for children's public transport. (August 5 and 12)
- Decree of 17 September 2018 defining the application of the decisions announced at the Interministerial committee of road safety of 9 January 2018.
- Order of 29 September 2008 on the high visibility jacket.
- Order of 30 September 2008 on emergency warnings for vehicles.

## Reflective safety jacket and emergency warning triangle (Decree of 30 July 2008)

They are mandatory in all vehicles with full bodywork registered in France and all foreign vehicles travelling in France. Applicable regulations must be complied with. The conformity of the jacket is certified by the EC marking; the conformity of the triangle is certified by the E 27 R mark. Non-compliance with these obligations is considered as a class 4 offence (Set fine of 135 euros, reduced fine of 90 euros).



### Decree of 30 July 2008

#### Televisions, video games consoles and DVD players

Use prohibited while driving. Non-compliance with these regulations is considered as a class 4 offence, confiscation of the appliance and loss of two points.

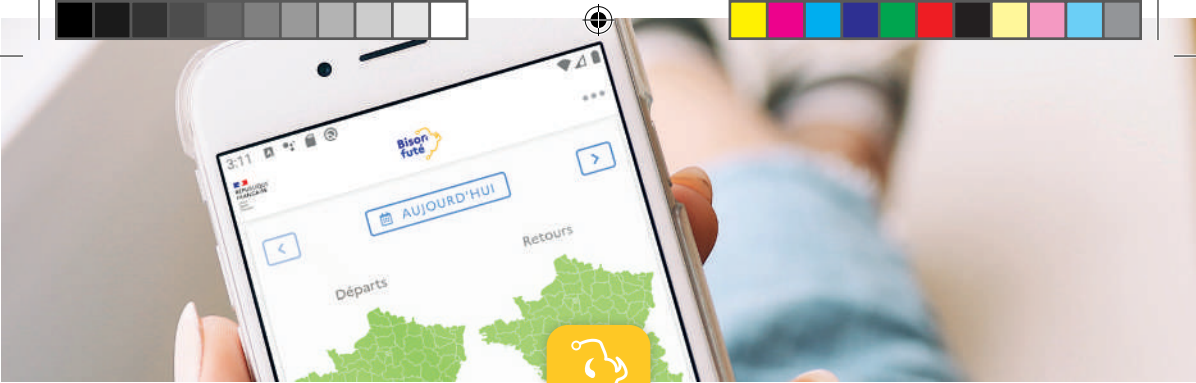


### Receive news updates, direct

In the event of particularly severe weather-related traffic disruption, Bison Futé offers road transporters the opportunity to receive, free of charge and in real time, via e-mail, information on the imposition and lifting of traffic prohibitions on the national road network.

Subscribe to «Transporters offer» on [www.bison-fute.gouv.fr](http://www.bison-fute.gouv.fr) (Data access > subscribe :Download the bulletin of subscription).





**PLEASE DOWNLOAD THE APP  
BEFORE YOU GO ON VACATION**



**ALL THE DETAILS REGARDING TRAFFIC  
RESTRICTIONS FOR HEAVY GOODS VEHICLES  
CAN BE FOUND AT THE WEB SITE  
[WWW.BISON-FUTE.GOUV.FR](http://WWW.BISON-FUTE.GOUV.FR)**